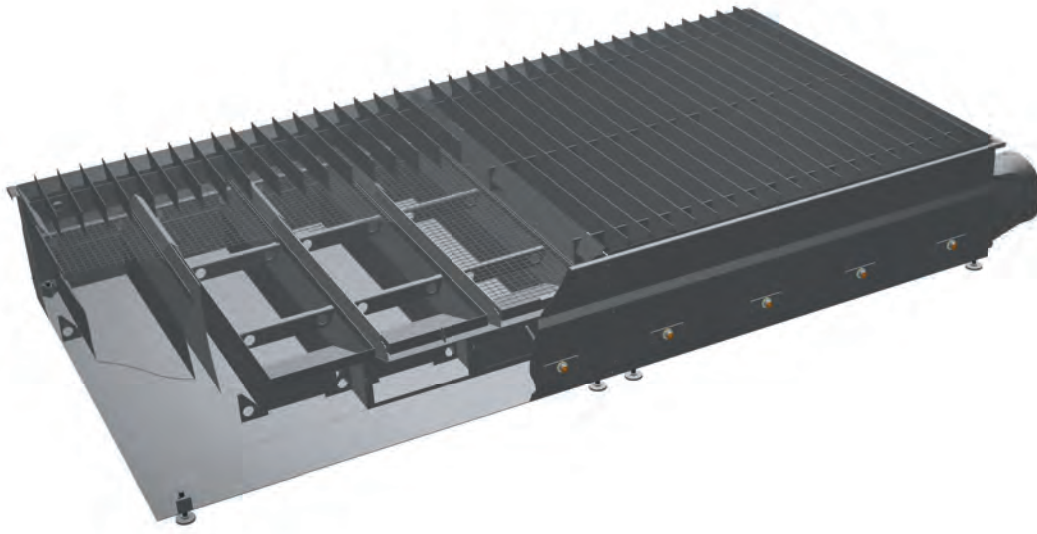


KemTab Basic

- » Basic type
- » Mechanical control



Benefits

- » Better cut quality and less wear due to innovative design of the material support easyFRAME
- » No external follow-up costs caused by in-house production of wear parts due to easyFRAME
- » No cleaning or maintenance required on the material support as it can be easily replaced (easyFRAME)
- » Energy cost savings due to low extraction volume thanks to individual control of the extraction dampers of the segment in use
- » Time and cost savings when cleaning the table due to large slag trays and thus longer cleaning intervals
- » Flexible table size design due to modular system (length, width)

Applications

- » For plasma cutting up to 150 amps (short peaks 250 A)
- » For gas cutting with sheet metal up to 75 mm thick

Properties

- » Low extraction volume
- » easyFRAME material support
- » Large slag trays
- » Mechanical control of the extraction damper in the individual table segments
- » Modular design

Technical Data

Basic data	
Module widths	1.100 mm, 1.600 mm, 2.100 mm, 2.600 mm, 3.100 mm
Working depth	800 mm
Working height	800 mm
Table height	700 mm
Segment distance	515 mm
Material support frame	EasyFrame Basic

