

# P4

TIG - With or without Filler Wire

**Portable Power Source** for orbital tube welding



# P4

## Portable Power Source for orbital tube welding

Compatible with all Polysoude™ welding heads and welding heads using filler wire

### Advantages

- ▶ Automatic welding procedure generation with an intelligent and intuitive user interface combined with the latest most reliable industrial electronics
- ▶ Real time welding data acquisition
- ▶ High precision inverter power source, compact design with integrated water cooling system
- ▶ Total weight net only 32 kg

Resulting from 50 years' experience in mastering welding technologies



### General Characteristics

- Program control by time or angular degrees calibrated in mm/min or inch/min
- Comprehensive real-time welding data acquisition
- Error-diagnostic system
- Automatic welding head recognition
- Built-in printer for welding procedure archiving and documentation
- Ethernet compatible
- Closed loop regulation of torch rotation and wire speed
- Welding gas control and backing gas with safety valve
- Built-in closed loop water cooling system with safety valve for welding head and torch
- Auto-range 100 - 230 V single phase ± 10 % compatible with field power generators



Offline & online programming with standard PC as well as optional touch screen



USB memory stick for saving, loading and archiving of welding programs and monitored welding data



Compatible with standard peripheral equipment – printer, bar code reader, oxygen indicator, etc.



Full function remote control with welding program selection

### Associated Welding Heads



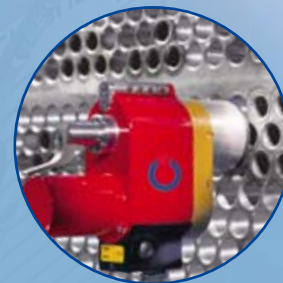
#### ▶ UHP + MW Series

Closed welding heads for TIG tube to tube welding without filler wire



#### ▶ MU Series

Open welding heads for TIG tube to tube welding with filler wire



#### ▶ TS Series

Open and closed welding heads for TIG tube to tubesheet welding with or without filler wire

### Wire Feeders



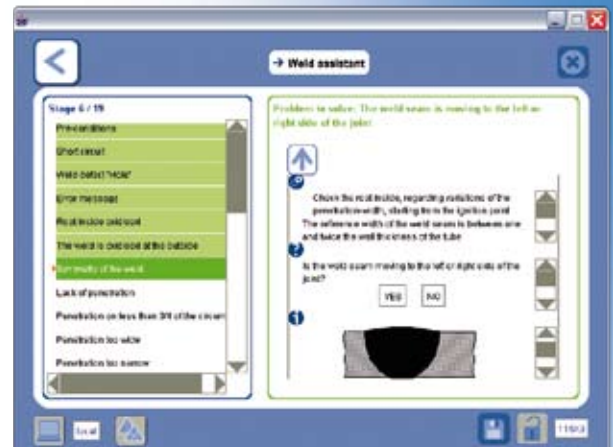
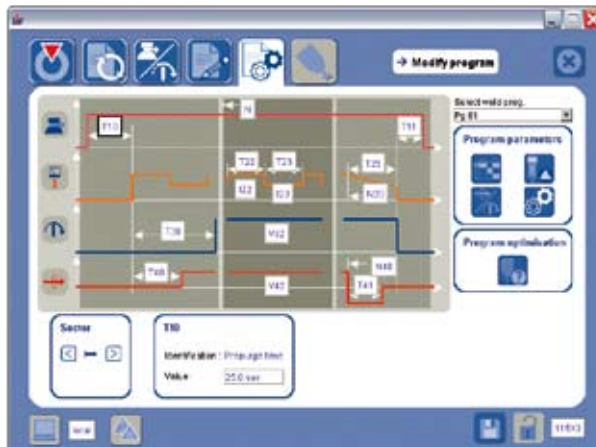
#### ▶ Polyfil-3

External wire feeder and other integrated wire feeders

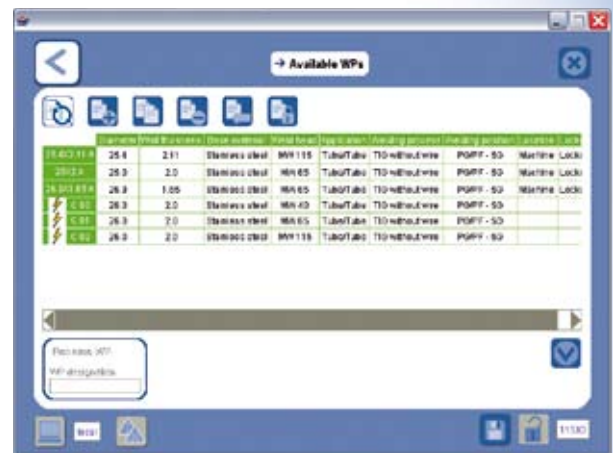
# Graphical User Interface (GUI): Just follow the instructions!

## ► Intuitive graphical interface

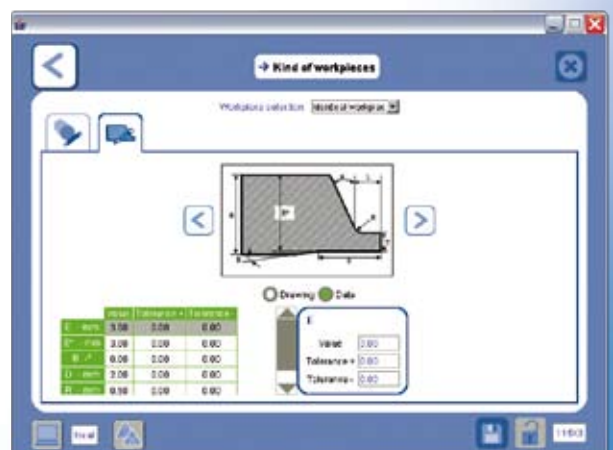
With multilingual “Help” menu for optimised welding programs



## ► Synergic mode auto-programming



## ► Traceability and complete documentation of mechanical and electrical parameters





# Technical Specification

Welding method	TIG - DC with or without Filler Wire
Input power (Auto-range)	Single phase 100 V / 115 V / 200 V / 230 V $\pm$ 10% - 50 / 60 Hz
Open circuit voltage	100 V
Insulation class	H
Protection class	IP 23 (touch screen closed)
Welding current standard (steps of 1 A)	Range 170 A: 3 to 170 A (200 V / 230 V)
High precision (steps of 1/10 A)	Range 50 A: 3 to 50 A (100 / 230 V)
Welding current precision	$\pm$ 1 A when $I \leq 100$ A and $\pm$ 1% when $I > 100$ A
Duty cycle	170 A / 25% at 230 V • 130 A / 40% at 115 V 110 A / 100% at 230 V • 100 A / 100% at 115 V
Motion controls	Torch rotation: constant or pulsed Wire feeder: constant or pulsed / automatic wire retract
Shielding gas control	Welding gas, backing gas with flow safety valve
Power source cooling	Forced ventilation
Welding torch cooling	Built-in closed loop water cooling system with flow safety valve
Display / recording (non-volatile) of real values during welding	Arc Voltage, welding current, electrode position in angular degrees, welding speed and wire speed
Welding program storage / transfer	Hard disc / USB memory stick
Dimensions L x W x H	630 x 320 x 500 mm
Net weight	32 kg
Standards	EN 60974-1 / EN 60974 -10



## Options and Accessories

- Large 10,4" colour touch screen with multilingual, graphically assisted welding software
- Laptop
- Full function remote control
- Wire feeder control
- Mini-printer
- Control kit for closed welding heads fitted with tachometer or welding heads other than POLYSOUDE™
- Manual tack welding kit including water-cooled TIG torch
- Extension cable (15 m) for welding heads
- Kit for backing gas
- Dual welding head switch box

# POLYSOUDE : Related Services

## ► Guidance and technical support

A welding application specialist in your area will advise you on the welding process and appropriate equipment for your application.

## ► Commissioning / Training

A complete training program will enable you to start using the equipment immediately and in the best way possible.

## ► Maintenance / Repair

Maintenance and repair operations can be carried out at the Polysoude plant as well as on site by our service network.

## ► Rental service

Increase the flexibility of your production! A large range of equipment is available for rental from our hire fleet.

## Your partners worldwide

**AUSTRALIA**  
POLYSOUDE S.A.S.  
☎ +33 (0) 2 40 68 11 00  
info@polysoude.com

**AUSTRIA**  
POLYSOUDE AUSTRIA GmbH  
☎ +43 (0) 3613 200 36  
austria@polysoude.at

**BELGIUM**  
POLYSOUDE BENELUX  
☎ +31 (0) 653 84 23 36  
k.meurs@polysoude.com

**POLYSOUDE BENELUX (SERVICE)**  
☎ +31 (0) 653 38 85 58  
h.milder@polysoude.com

**BRAZIL**  
AJADE COMÉRCIO INSTALAÇÕES  
E SERVIÇOS Ltda.  
☎ +55 (0) 11 45 24 38 98  
fernando@ajade.com.br

**BULGARIA**  
KARWELD FOOD  
☎ +359 (0) 29 73 32 15  
Karweld@bg400.bg

**CANADA**  
MAG TOOL Inc.  
EDMONTON - ALBERTA  
☎ 800 661 9983  
magtool@magtool.com

**MAG TOOL Inc. CAMBRIDGE - ONTARIO**  
☎ +1 519 651 10 50  
michael@magtool.com

**CHINA**  
POLYSOUDE SHANGHAI CO. Ltd  
☎ +86 (0) 21 64 09 78 26  
j.zhang@polysoude.cn

**CROATIA**  
EUROARC D.O.O.  
☎ +385 (0) 1 2 40 60 77  
euroarc@euroarc.hr

**CZECH REPUBLIC**  
POLYSOUDE CZ  
☎ +420 602 60 28 55  
m.matousek@polysoude.cz

**DENMARK**  
POLYSOUDE DENMARK  
☎ +45 (0) 32 94 85 10  
orbital@polysoude.dk

**EGYPT**  
POLYSOUDE UK  
☎ +44 (0) 1942 820 935  
info@polysoude.com

**ESTONIA**  
POLYSOUDE S.A.S.  
☎ +33 (0) 2 40 68 11 00  
info@polysoude.com

**FINLAND**  
SUOMEN TEKNOHAUS OY  
☎ +358 (0) 927 47 2 10  
info@teknohaus.fi

**FRANCE**  
POLYSOUDE S.A.S.  
☎ +33 (0) 2 40 68 11 00  
info@polysoude.com

**GERMANY**  
POLYSOUDE DEUTSCHLAND  
KORNWESTHEIM  
☎ +49 (0) 7154 1796 90  
info@polysoude.com

**POLYSOUDE DEUTSCHLAND LEVERKUSEN / OPLADEN**  
☎ +49 (0) 7154 1796 90  
info@polysoude.com

**ITALY**  
POLYSOUDE ITALIA SRL  
☎ +39 02 93 79 90 94  
info@polysoude.it

**JAPAN**  
GMT CO Ltd - KAWASAKI  
☎ +81 (0) 44 222 6751  
gmt@e-gmt.co.jp

**GMT CO Ltd - OSAKA**  
☎ +81 (0) 789 35 6751  
gmt.kansai@e-gmt.co.jp

**JORDAN**  
POLYSOUDE UK  
☎ +44 (0) 1942 820 935  
info@polysoude.com

**NEW ZEALAND**  
POLYSOUDE S.A.S.  
☎ +33 (0) 2 40 68 11 00  
info@polysoude.com

**NORWAY**  
TEMA NORGE AS  
☎ +47 (0) 51 69 25 00  
tor.inge.tjensvoll@tema-norge.no

**PAKISTAN**  
POLYSOUDE S.A.S.  
☎ +33 (0) 2 40 68 11 00  
info@polysoude.com

**PHILIPPINES**  
POLYSOUDE ASIA  
☎ +86 (0) 65 862 60 08  
Jmpan@singnet.com.sg

**SINGAPORE**  
POLYSOUDE ASIA  
☎ +86 (0) 65 68 62 60 08  
Jmpan@singnet.com.sg

**SIN SOON HUAT WELDING PRODUCTS PTE. Ltd**  
☎ +65 (0) 62 65 60 88  
wchng@sshcorp.com

**SLOVAKIA**  
POLYSOUDE CZ  
☎ +420 602 60 28 55  
m.matousek@polysoude.cz

**SOUTH AFRICA**  
POLYSOUDE S.A.S.  
☎ +33 (0) 2 40 68 11 00  
info@polysoude.com

**SOUTH KOREA**  
CHEMIKO CO Ltd  
☎ +82 (0) 2 567 5336  
chemiko@chol.com

**SPAIN**  
PRAXAIR SOLDADURA S.L.  
☎ +34 (0) 91 78 55 77 09  
Luis\_Alfredo\_de\_Andres@praxair.com

**SWEDEN**  
POLYSOUDE BENELUX  
☎ +31 (0) 653 84 23 36  
k.meurs@polysoude.com

**SWITZERLAND**  
POLYSOUDE (SWITZERLAND) Inc.  
☎ +41 (0) 43 243 50 80  
contact@polysoude.ch

**TAIWAN R.O.C.**  
FIRST ELITE ENT. CO. Ltd  
☎ +886 (0) 2 87 97 88 99  
auto.pipe@msa.hinet.net

**THAILAND**  
POLYSOUDE ASIA  
☎ +86 (0) 65 6862 60 08  
Jmpan@singnet.com.sg

**TURKEY**  
POLYSOUDE S.A.S.  
☎ +33 (0) 2 40 68 11 00  
info@polysoude.com

**UNITED ARAB EMIRATES**  
GERMAN GULF ENTERPRISES Ltd  
☎ +971 (0) 65 31 61 71  
info@polysoude.com

**UKRAINE**  
POLYSOUDE RUSSIA  
☎ +7 (0) 495 564 86 81  
polysoude@co.ru

**UNITED STATES**  
ASTRO ARC POLYSOUDE Inc.  
☎ +1 (0) 661 702 01 41  
sales@astroarc.com

**VENEZUELA**  
ENRIVA C.A.  
☎ +58 (0) 243 242 45 41  
enriva@cantv.net



**LATVIA**  
POLYSOUDE S.A.S.  
☎ +33 (0) 2 40 68 11 00  
info@polysoude.com

**LITHUANIA**  
POLYSOUDE S.A.S.  
☎ +33 (0) 2 40 68 11 00  
info@polysoude.com

**MALAYSIA**  
POLYSOUDE ASIA  
☎ +86 (0) 65 862 60 08  
Jmpan@singnet.com.sg

**MEXICO**  
ASTRO ARC POLYSOUDE Inc.  
☎ +1 (0) 661 702 01 41  
sales@astroarc.com

**NETHERLANDS**  
POLYSOUDE BENELUX  
☎ +31 (0) 653 84 23 36  
k.meurs@polysoude.com

**POLYSOUDE BENELUX (SERVICE)**  
☎ +31 (0) 653 38 85 58  
h.milder@polysoude.com

**POLAND**  
TEFROMES Sp. z o.o. - IMIELIN  
☎ +48 (0) 32 225 62 77  
biuro@tefromes.com.pl

**UNIDAWELD - BEDZIN**  
☎ +48 (0) 32 267 05 54  
dariusz.szota@unidaweld.pl

**ZALCO Sp. z.o.o. - WARSZAWA**  
☎ +48 (0) 22 894 55 30  
mbergman@zalco.pl

**PORTUGAL**  
PRAXAIR PORTUGAL GASES, S.A.  
☎ +351 (0) 229 438 320  
pbarbosa@praxair.com

**ROMANIA**  
DEBISUD S.R.L.  
☎ +40 (0) 255 21 57 85  
debisud@rdslink.ro

**RUSSIA + C.I.S.**  
POLYSOUDE RUSSIA  
☎ +7 495 564 86 81  
polysoude@co.ru

**SAUDI ARABIA**  
ALRUQEE INDUSTRIAL  
MARKETING COMPANY  
☎ +966 (0) 385 7 63 87  
I1Manager.Khaldoun@alruqee.com