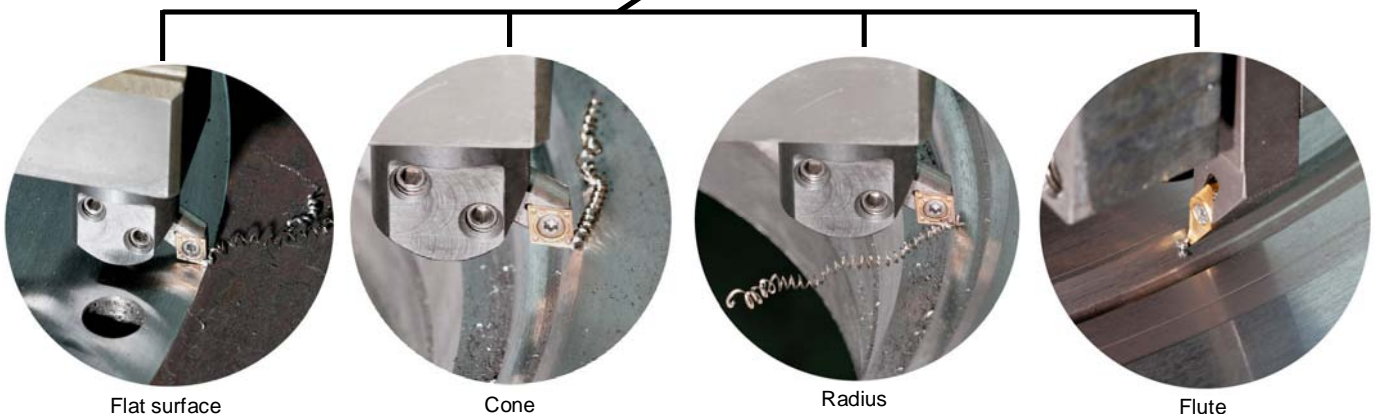
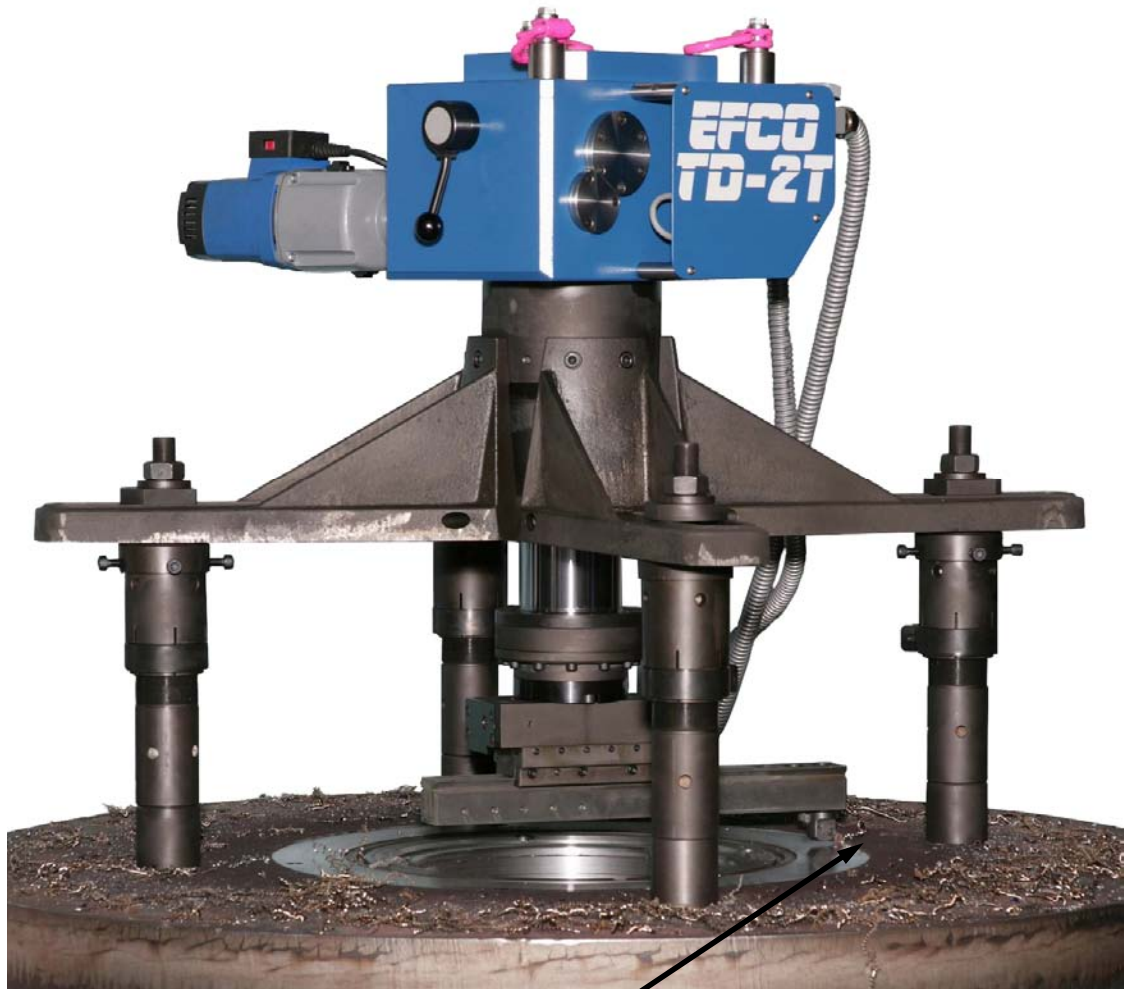


YOUR PARTNER WORLDWIDE



TD-2T

**Portable turning machine for flat surfaces,
cylindrical surfaces, radii and cones**



Flat surface

Cone

Radius

Flute

THE PREMIUM-PRODUCTS – MADE BY EFCO – MADE IN GERMANY

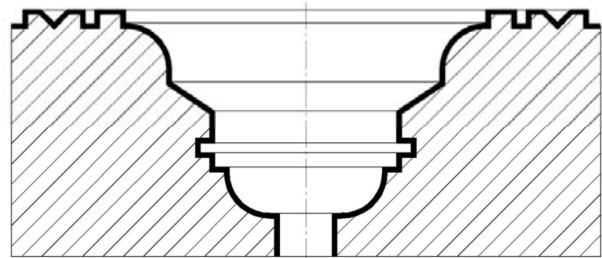
Tomorrow's technology to machine today's valves

The TD-2T is a portable turning machine with an external clamping system. It can be controlled in two axes (X and Z).

This machine version, as are all TD series turning machines, is designed for the machining of internal and flat faces of rotationally symmetrical components.

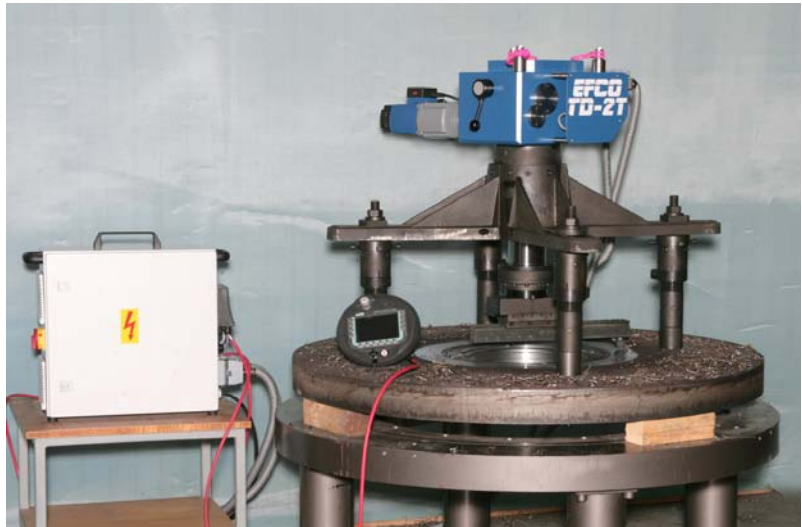
The TD-2T has the following features:

- Many different faces can be machined
- External operation ⇒ no operation at turret required
- Complete machining without additional tools
- Infinitely adjustable axial and radial feeds
- Compact design ⇒ low weight
- Requires little maintenance
- Either manual or automatic operation
- Simple to use



Many different faces can be machined

Just using the basic equipment, it is possible to carry out almost all types of turning work on valves, e.g. machining of valves, non-return valves, pumps, flanges, cylinders and similar workpieces.



The standard equipment consists of:

- **Standard machine**

The standard machine consists of the complete gear unit and the shaft encoders for X and Z axes.

The basic version of the machine comes with a facing head (radial stroke 100mm (3.9")).

- **Clamping system**

Using four clamping bolts, the machine is mounted outside the surface to be machined. This may, for example, be the valve flange.

On workpieces without flange, an optional tensioning chain may be fitted around the workpiece.

- **Extensive lathe tool range**

Using the standard tools, flat faces up to a diameter of 800 mm (31.5") can be machined. In addition, bores up to a depth of about 600 mm (23.6") can be machined. The maximum bore diameter at this insertion depth is about 600 mm (23.6").

- **Machine controller**

The TD-2T is equipped with a 2 axes controller which makes it possible to move both axes simultaneously at different speeds.

The components of this controller are situated in a small control box.

Simple machine operation via a portable electronic console.

Examples:



- Turning cones -

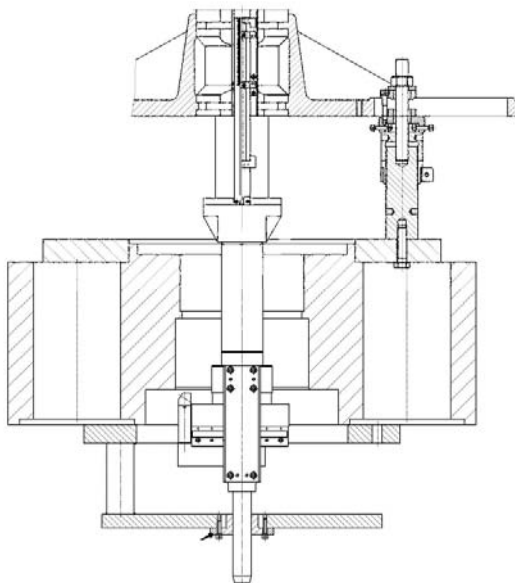


- Turning radii -

Option

- **Insertion depth extension to 1500 mm (59")**

In addition, the machine can be equipped with an insertion depth extension. With additional thrust bearing below the turret. Also suitable for backing off flat surfaces.



TD-2T Specification

Facing range	0-800 mm (0-31.5")
Bore machining I - up to max. insertion depth of 100 mm (3.9")	50-800 mm (2"-32")
Bore machining II - up to max. insertion depth of 200 mm (7.8")	240-800 mm (9.4"-31.5")
Bore machining III - up to max. insertion depth of 600 mm (23.6")	240-600 mm (9.4"-23.6")
Max. working depth	600 mm (23.6")
Cutting speed	276 m/min (10.9")
Machining feed	0-2 mm/rotation (0-0.079")
Chip thickness	0-2 mm (0-0.079")

The TD-2T machine, as do all EFCO products, provides a complete repair system.

The machine is supplied with extensive accessories. Machine and accessories are supplied in a practical and robust workshop trolley.



TD-2T in workshop trolley

Subject to technical change.

EFCO Maschinenbau GmbH – Valve repair and testing equipment

Otto-Brenner-Straße 5 – 7 • D - 52353 Düren • Phone: +49-(0)2421-989-0 • Fax: +49-(0)2421-86260

info@efco-dueren.de • sales@efco-dueren.de • www.efco-dueren.com

Agencies in many countries

07/2008 - 04